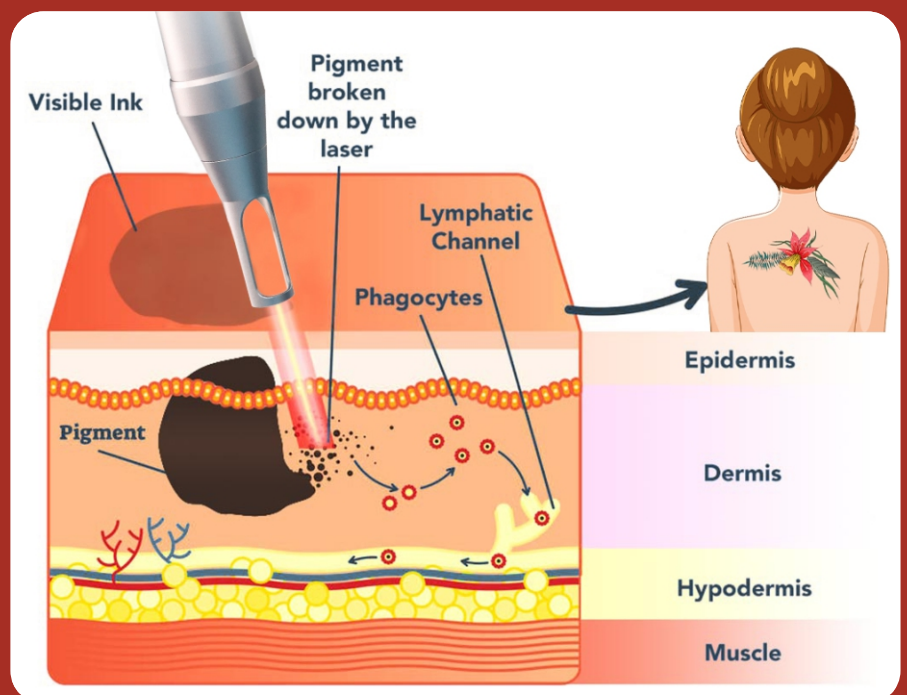


Ultra Picolris

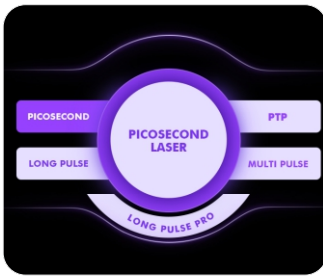
Active ND YAG LASER Q-SWITCH

WORKING PRINCIPLE

The high-powered, Active Q-Switch Nd:YAG laser with its ultra-short 2nsec pulse width, is the most effective method for removing natural or artificial pigmentation, the laser energy is absorbed by chromophores in the skin, resulting in a photo acoustic effect which fragments the pigment, maintaining the surrounding tissue intact. This results in subsequent fading and clearing of the pigment due to the body's immune system response.

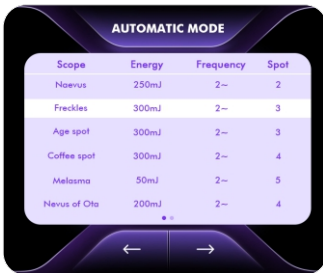


Configuration advantages



01/ Five treatment modes

Five treatment modes available, always the most suitable pulse width and energy output for all kinds of indications, bringing best result and shortest recovery time!!



02/ In-Built clinical database

In-built clinical database out of over 70000 sets of PZLASER Pico Qswitch yag Laser sold always bring the most commonly used parameters recommendations for reference, making it easiest for even new beginners to start!!



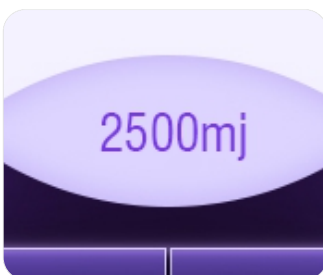
03/ Integrated power supply and 4 operate independently control systems

Integrated power supply and 4 capacitors not only ensure highest, the most stable power output, also being key point to identify true Pico Qswitch yag Laser (most other competitors have only single capacitor)!!



04/ Easy-to-screw off external bottle filters

Easy-to-screw off filter bottle filters distilled water to provide the best working medium for cutting-edge precision lasers source, thus maximizes laser source lifespan!!!



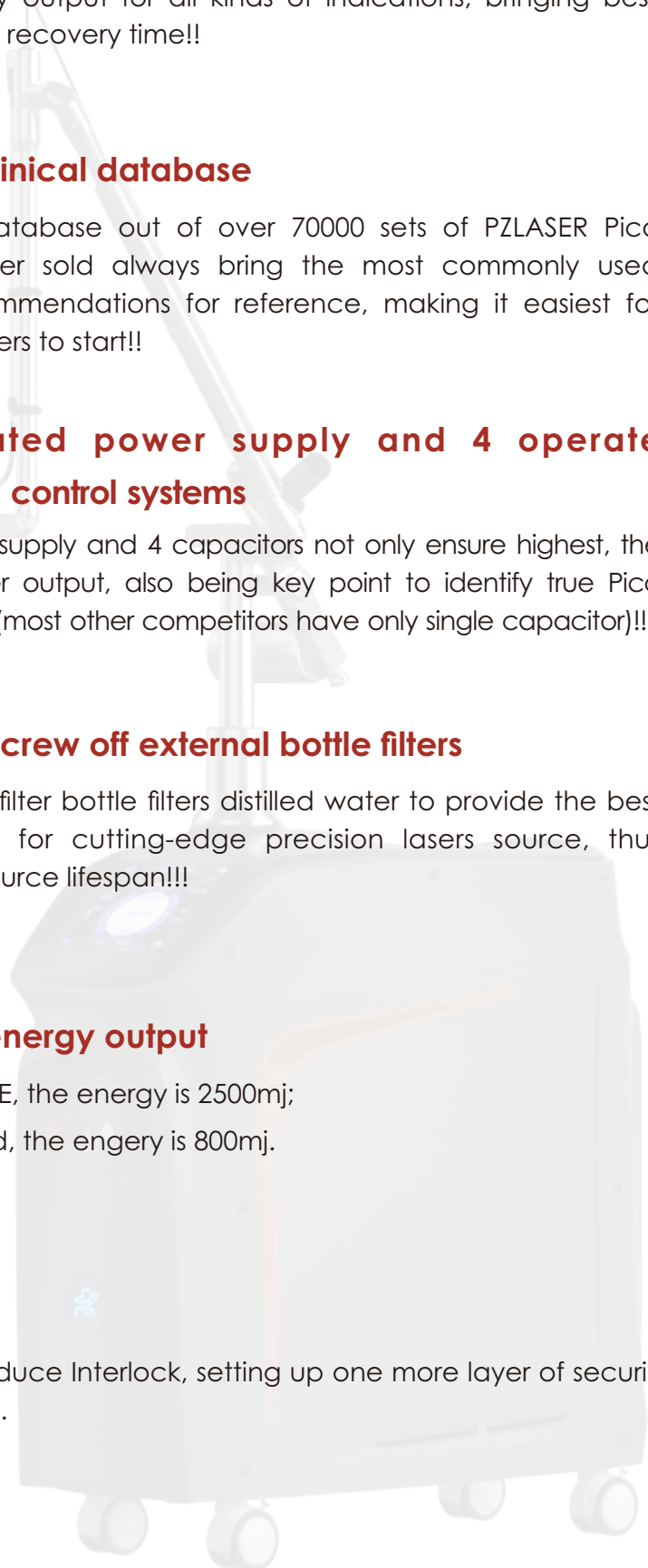
05/ Highest energy output

Under LONG PULSE, the energy is 2500mj;
Under picosecond, the energy is 800mj.



06/ Interlock

China first to introduce Interlock, setting up one more layer of security for clients, truly full.



Ultra Picolris Active ND YAG LASER Q-SWITCH



Freckle removal



Hair removal



Acne clearance



Improve varicose veins



Facial rejuvenation



Onychomycosis



Tattoos removal



Short pulse time, Strong instantaneous energy

Really ultra-short pulse width of 2-3ns, more intense blasting of the pigment, no heat, no damage to the skin, instantly transforms the pigment into dust, fast metabolism.



Multiple wavelengths /Comprehensive

Fully covers all deep stubborn pigments and benign pigmented lesions, regardless of skin color, treat various skin problems.



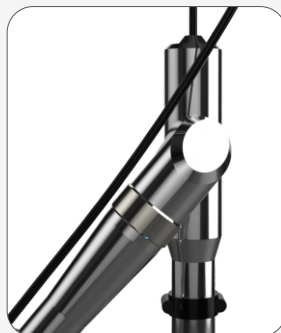
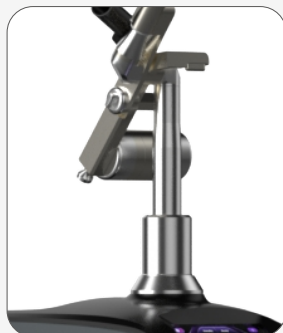
Precise

Extraordinary technological innovation, 100% focused energy can accurately control the depth and energy of treatment.



Ultra Picolris

Active ND YAG LASER Q-SWITCH



- Customized **Korean Seven-Joint Arm**
- **High barrel light guide arm:** rate of energy loss $\leq 8\%$
- Luxury design
- Free **360°** of rotation, ensure constant energy laser power
- It is more **shock-resistant** than existing products
- Modern design

APPLICATIONS

PICOSECOND

It can be applied to most of the spots, birthmarks or tattoos, skin rejuvenation treatment, tattoo!

PTP

Melasma, Moles, Tattoo, Dark Eye Circles, Pores, Hyperpigmentation

MULTI PULSE

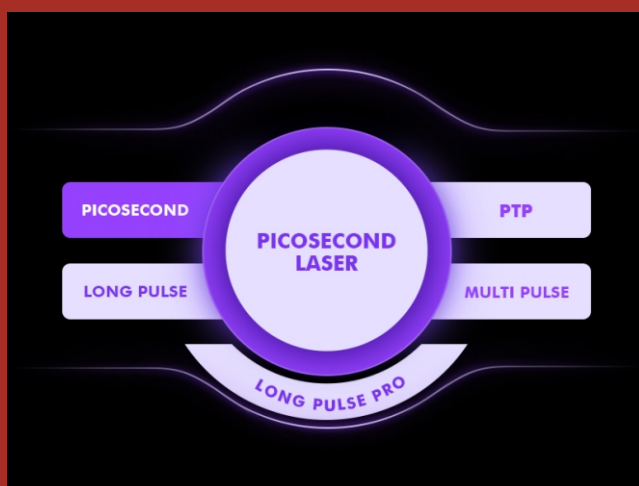
Mainly used for chloasma, Stubborn stain and pigments

LONG PULSE

Vascular, Scars, Acne, Rosacea/dif fuse redness, Onychomycosis, Rejuvenation, firming, whitening, shrinking pores, Remove fine wrinkles, Heating dermal cells, hair removal, improve Varicose veins

LONG PULSE Pro

Vascular, Scars, Acne, Rosacea/dif fuse redness, Onychomycosis, Rejuvenation, firming, whitening, shrinking pores, Remove fine wrinkles, Heating dermal cells, hair removal, improve Varicose veins



Acne Scars

depressed scarring

dull skin

uneven skin tone

lack of collagen

stubborn tattoos

Standard applicator

3 wavelength in 1 : 1064nm, 532nm, 755nm



Optional applicators

Fractional applicator, 585nm applicator, 650nm applicator

Fractional applicator



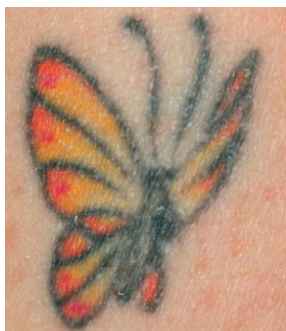
585nm applicator



650nm applicator



Before and After



Ultra Picolris

Active ND YAG LASER Q-SWITCH

TECHNICAL SPECIFICATIONS

Laser Type	Nd:YAG				
Pulse width	Picosecond mode		300ps-350ps		
	LP mode		300US		
Beam profile	Flat-top mode				
Wavelength	1064nm,532nm,755nm (Standard configuration) 585nm, 650nm, Honeycomb				
Treatment modes	Picosecond / PTP / Multi pulse / Long pulse / Long pulse Pro				
Pulse energy	1064NM	Model	Minimum	Maximum	Stepping
		Picosecond	100mj	800mj	50mj
		PTP	100mj	1200mj	50mj
		Multi Pulse	100mj	1500mj	50mj
		Long Pulse	200mj	2500mj	100mj
		Long Pulse Pro	200mj	5000mj	100mj
	532NM	Picosecond	50mj	400mj	25mj
		PTP	50mj	600mj	25mj
		Multi Pulse	50mj	750mj	25mj
		Long Pulse	/	/	/
Long Pulse Pro		/	/	/	
Spot size	2-10mm Adjustable				
Aiming beam	Diode 650nm<5mw (Red)				
Repetition rate	1-10HZ adjustable				
Package dimension and weight	100*53*115cm (101KG) 21*44*106 (13KG)				
Power supply	AC110V/230V, 50/60HZ				

UMS Sculptor

/Non-invasive Fat Dissolving /Muscle Building /Private Anti-Age

(Fat Burning and Muscle Building) Innovative Hifem Technology

The pulse energy focuses more precisely on the muscle group, high frequency increases muscle extension, and enhances the super-speed decomposition and metabolism of cells; At the same time, the high-speed frequency contraction stimulates the growth and strengthening of muscles without affecting the surface skin.

(Private Health) Patented Electromagnetic Technology

The high-intensity focused electromagnetic field stimulates motor neurons to control the pelvic floor muscles to perform 20,000 Kegel exercises, which is non-invasive and non-invasive to improve pelvic floor muscle relaxation and other symptoms.

Multi-Function, New Technology



PZLASER®

UMS Sculptor



• Flat applicator

• Curve applicator



• It's for arms, abdomen, pelvic floor and buttock.

WHY CHOOSE US?

High output **working frequency** up to **150HZ**

Plug-in type, working head design is more convenient and stable.

Air cooling technology ensures that the machine can work continuously for more than 10 hours without failure

The medical research shows that after one course of treatment, it can effectively increase **16%** muscle and reduce **19%** fat at the same time.

Non-invasive, no downtime, no side effects and pain free

2/4 patented handles with two types (flat and curve), plus seated working head can work at the same time, meeting the simultaneous operation to different clients and different target areas.

UMS Sculptor

“ SELECTIVE PURCHASE

SEATED WORKING HEAD

Nicely Fit in Multiple Models

High-energy-focused electromagnetic technology fully activates pelvic floor muscle. It perfectly simulates the curve of the buttocks and accurately targets the gluteus. The 15° inclination design allows the legs to relax naturally. The raised support area in the center accurately fits the pelvic floor muscles. It's suitable for men and women of all ages and effectively solves various pelvic floor muscle injuries.



Quality of
Life Improvement



Prevent Stress
Urinary Incontinence



Post-partum
Recovery



Rehabilitation
of Pelvic Muscles



Pubococcygeous
Enhancement



Women's Private
Health Improvement



BEFORE



8 WEEKS AFTER 4th TREATMENT



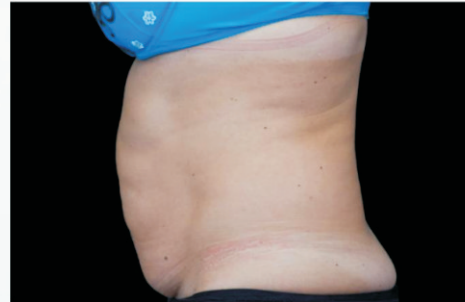
BEFORE



8 WEEKS AFTER 4th TREATMENT



BEFORE



8 WEEKS AFTER 4th TREATMENT

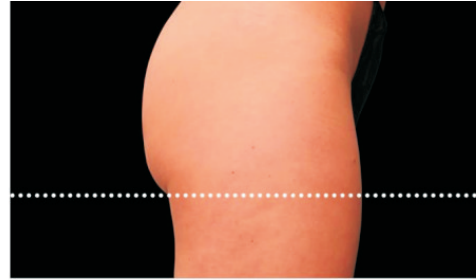


UMS Sculptor

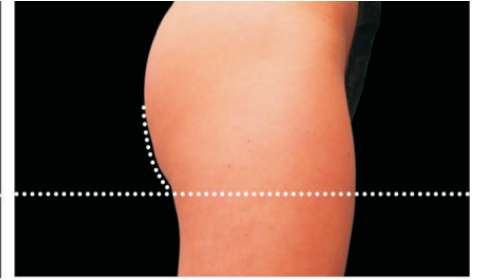
BEFORE AND AFTER

UMS Sculptor

BEFORE



8 WEEKS AFTER 4th TREATMENT



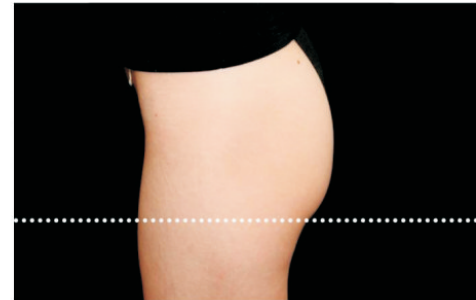
BEFORE



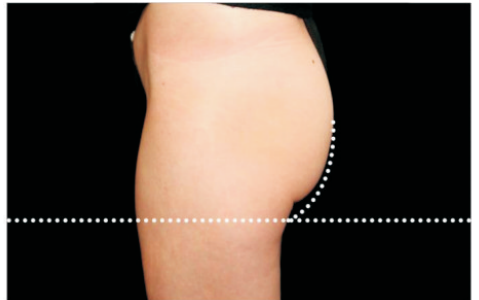
8 WEEKS AFTER 4th TREATMENT



BEFORE



8 WEEKS AFTER 4th TREATMENT

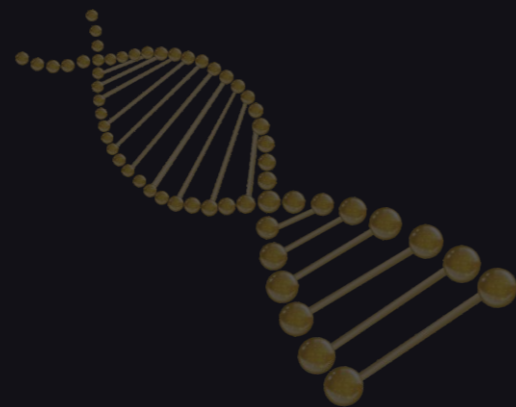


BEFORE AND AFTER



10D

COOL GLAMOR®



CORE ADVANTAGES



Layered anti-aging

Two types of cartridges with six-depth targets can achieve layered anti-aging effect of SMAS fascia, superficial fascia and dermis.



High comfort

The treatment process with "microfocused ultrasound" technology is gentle, comfortable, safe and effective.



Long-lasting effect

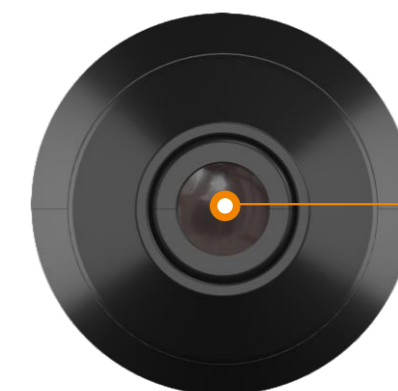
Good effect can be achieved with only one treatment, and can last for more than 3 years.



Cutting-Edge Technology

The best combination with MFU (Microfocused Ultrasound)+ SD (Synergy Dotting) technology.

- ⦿ Maximize the clinical results, minimize the treatment pain and swelling.
- ⦿ Double lifting effects with SD overlapping treatment after linear and dotting procedure.



1 Dot MFU

To make the magic happen with your face and body !

Patented safety

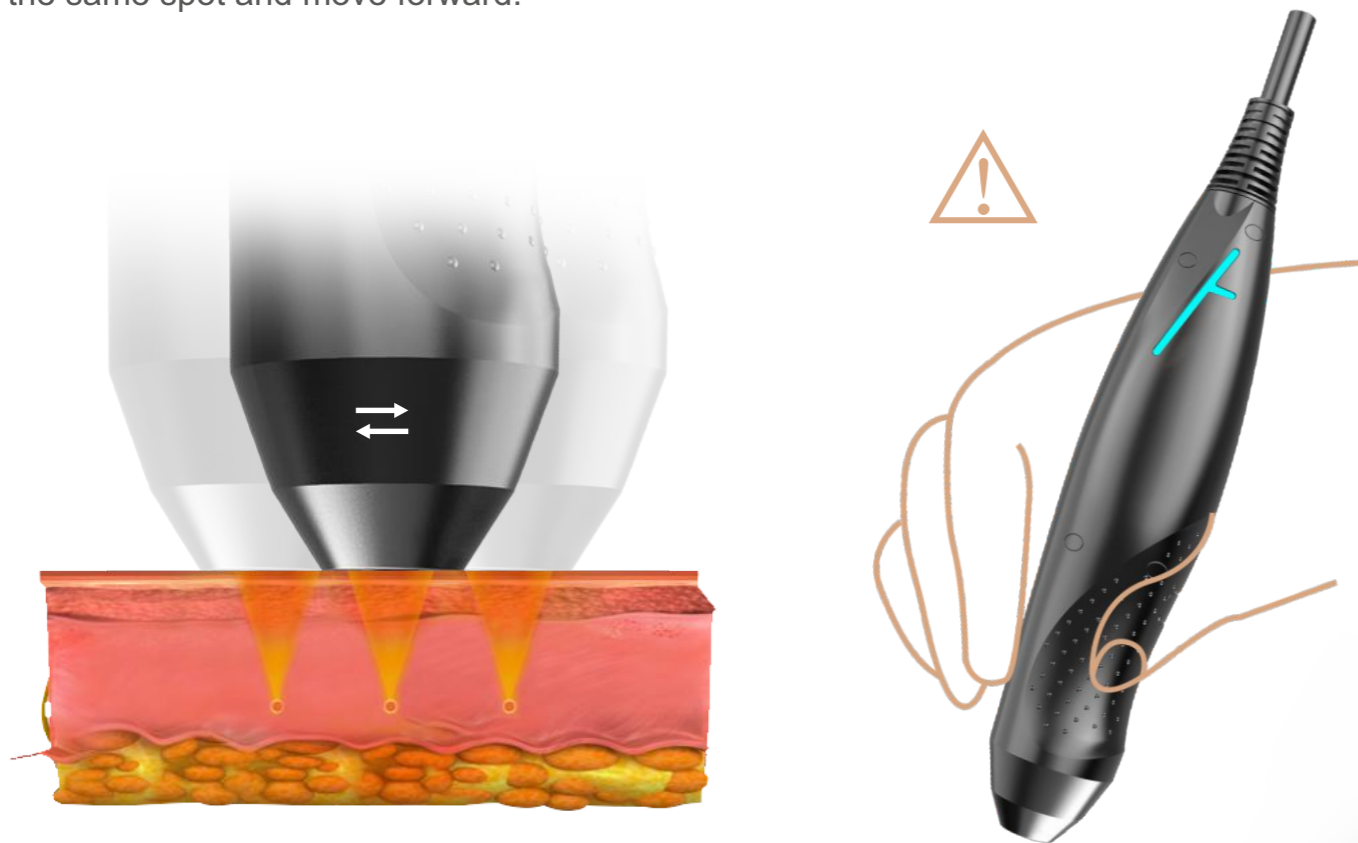
FL contact sensor : The cartridge will stop operating to prevent damage when it is not contacted with the skin.

FL movement sensor : The movement sensor prevents consecutive shots in one place.



Patented safety

SD gyro sensor: Use SD gyro sensor to prevent overlapping on the same spot and move forward.



10D

COOL GLAMOR®



Benefits

- 1 Provide new experience and effect.**
The synergy of MFU provide better results.
- 2 Profit making device with new MFU technology and various handpieces.**
High treatment price can be formed based on the synergy of MFU.
Not only skin but also body contouring is possible with the specialized body applicators.
- 3 Shorten procedure time.**
Improved treatment speed with various of applicators is no dead angle in operation.



FL
6types

Various cartridges with different depths to meet customized treatment needs depending on the skin type, treatment area and depth of dermis to subcutaneous fat layer.

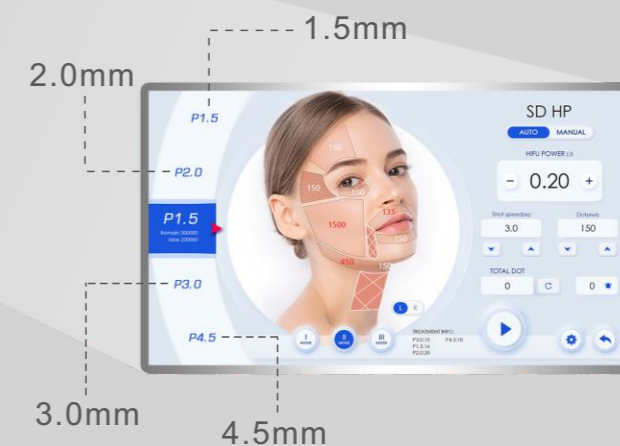
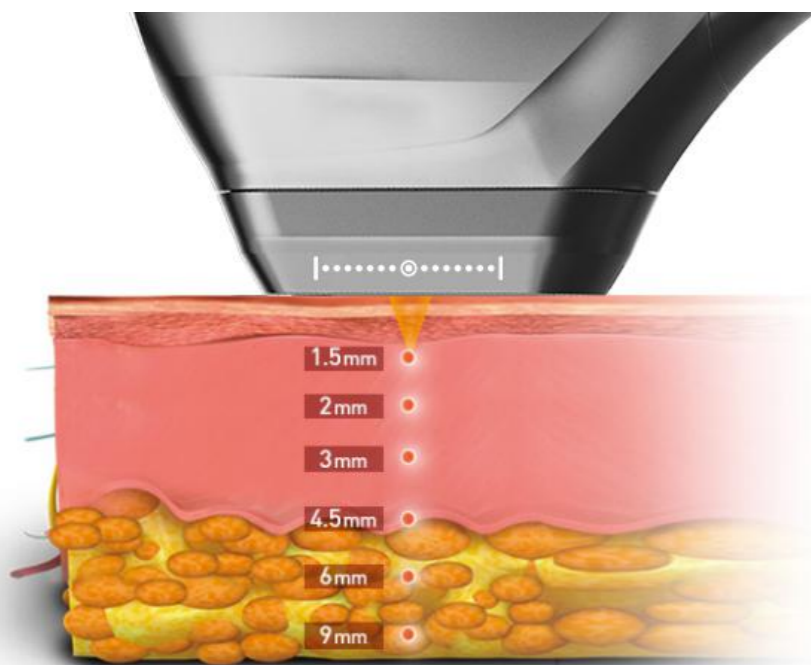


SD
4types

Various cartridges up to 10 types

Customized treatment depending on the skin type, treatment area and depth of dermis to subcutaneous fat layer.

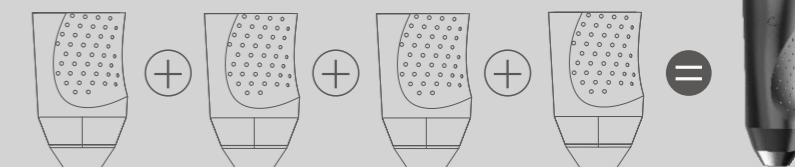
- ⊙ FL(Focused Ultrasound Linear) 6 types : Face 4 types (1.5mm+2.0mm+3.0mm+4.5mm with 7MHZ), Body 2 types (6.0mm+9.0mm with 4MHZ).
- ⊙ SD (Synergy Dotting) 4 types : face 4 types(1.5mm+2.0mm+3.0mm+4.5mm, can adjust the penetration depth manually).



15.6 inch intelligent Android UI

Slim and light cartridges with adjustable penetration depths.

Convenient and safe treatment for curved, narrow areas with better visibility on the treatment spot .



Before & After



Before



After



Before



After



Before



After



Before



After



Before



After



Before



After

PZLASER®

Address: 13th Floor, Block C, Building 18, University Science Park East, Zhongyuan District,
Zhengzhou, Henan Province, Zhengzhou City, Henan Province, China Postcode: 450008
Tel/Fax: +86 0371 55677886 Email: info@pzlaser.com Company website: www.pzlaser.com



360°
Surrounding
Cooling Technology

-11°C
Maximum Cooling

20%
stronger suction

35%
fat reduction
in 1 session



HOW DOES IT WORK ?

HUMANIZED TREATMENT ADVANTAGES

Constant Temperature Technology



Customized Treatment Plan



For ALL body profiles and concerns



Patient Satisfaction at 90% and higher



Get immediate results after your very first treatment



Patented Massage Mode



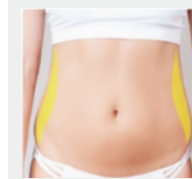
Diverse Range of Applicators



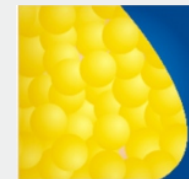
Patented Pre-heating Lymph Mode



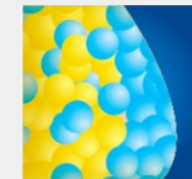
CoolMax 360° uses state-of-the-art freezing technology removes excess subcutaneous fat from a specific location. The state of the art 360° cryolipolysis fat freezing technology removes excess fat from a specific part of the body by dissolving fat cells using cool temperature without damaging the surrounding tissue. Once cold, fat cells will decompose naturally and gently be eliminated through the body's normal metabolic processes. Designed with 360° Surround Cooling Technology, the multiple cooling cups fit all curves and contours from as high as your chin all the way down to the knees to deliver absolute, non-invasive body contouring your way.



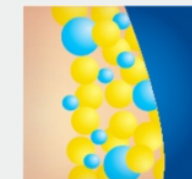
You may struggle with stubborn fat even after jogging and dieting.



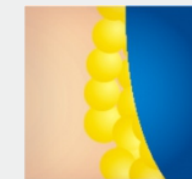
The CoolSlimming suction your skin and subcutaneous layers.



Cooling energy then freezes fat deposits to induce apoptosis.



Crystallized fat cells die off through the body's natural metabolism.



Remaining fat in the target area becomes leaner and less dense.



Combine with your healthy regimen to look slimmer and confident.

8 INNOVATIVE DESIGNS TO REDUCE CELLULITE SAFELY AND MORE COMFORTABLY

7 in1 multi-size applicator

Ergonomic design, skin-friendly fit the body arc
Meet the whole body fat reduction needs
from the face to the legs

Medical flexible LSR silicone cups

Whole shaped molding 360° cups,
delicate and soft, comprehensive
care for the skin



Innovative "Preheat" technology

Intelligent preheating system,
heating first and then cooling,
soothing the body,
enhancing blood circulation,
safe and comfortable.



Patented Massage Mode

Simulate the frequency of human hand massage, repeatedly contract and relax the muscles, effectively relieve the tension of the superficial muscles and speed up the blood circulation.

Innovative Constant Temperature Technology

Independent research and development of constant temperature technology, precise temperature control, intelligent monitoring of temperature changes during treatment.

Upgrade vacuum system, the suction is increased by 20%

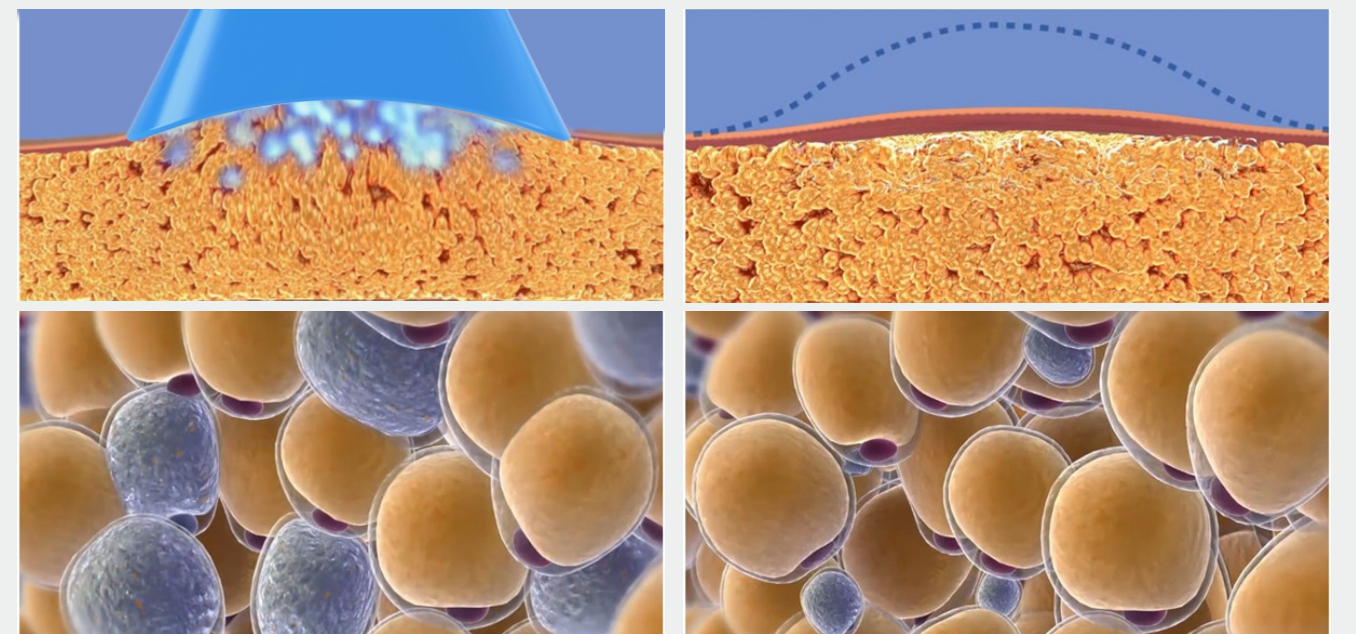
A powerful negative pressure air pump is used to freely adjust the suction force for customized treatment.

Self-cleaning

Equipped with intelligent Self cleaning function, one-button automatic cleaning after treatment, saving time and effort.

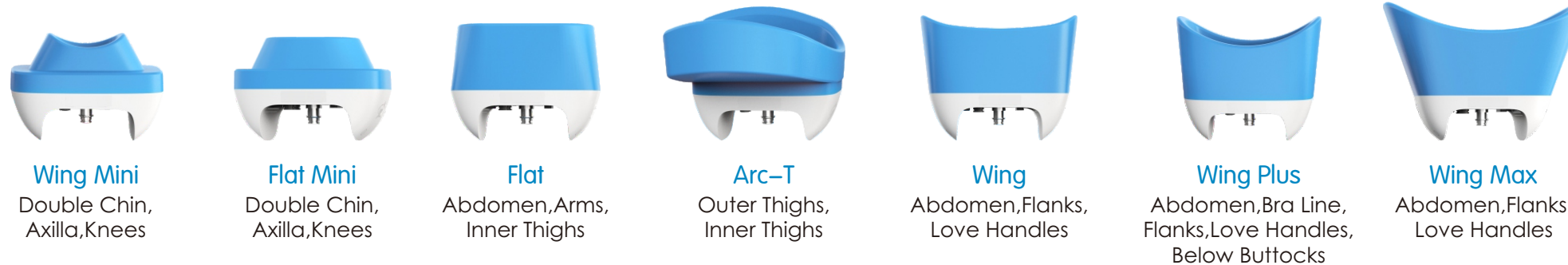
4 Applicators could work at the same time or individually

Each handle has an independent engine , which can work with 1 or a combination of 2, 3, and 4, with maximum power.



Fast and Easy Applicator Exchange

With a simple press-and-release mechanism, the Cool Max 360° allows maximum convenience and makes switching cooling cups as simple as possible. Detaching cables or turning the system off is not required even during treatments.



*The part description is for reference only, please select the corresponding handle according to the individual body part for actual operation.

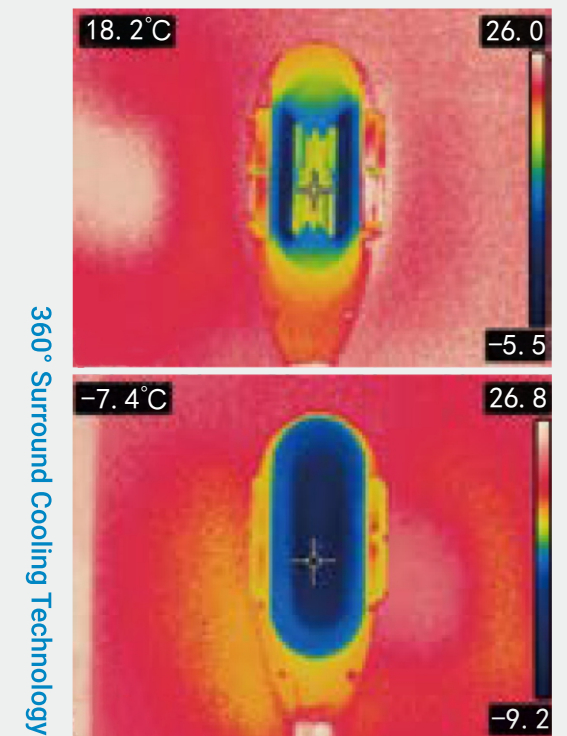


Treat 4 Areas Simultaneously in Only 40 Minutes.

The Cool Max 360° is equipped with an expandable range of applicators that makes it easier than ever to achieve significant results on the most challenging of areas.

Upgraded Technology for Enhanced Results.

The upgraded 360° surround cooling of the Cool Max 360° delivers cooling energy throughout the entire applicator and makes it possible to reach the designated treatment temperature at a faster rate, thus increasing efficiency by up to 25%.



EosICE[®] MAX

A TREATMENT THAT IS EFFECTIVE, FAST AND COMFORTABLE

Eos ice offers the synergistic benefits of the 3 most effective wavelengths for hair removal, each targeting different structures within the hair follicle. The 3 main anatomical targets include the bulge, bulb and papilla. With an improved patient experience and a business-oriented approach, it can create a unique and result-driven new solution in the world of professional hair removal.



Efficacy:

Laser energy delivered more efficiently.



Safety:

Lower fluence is required per pulse.



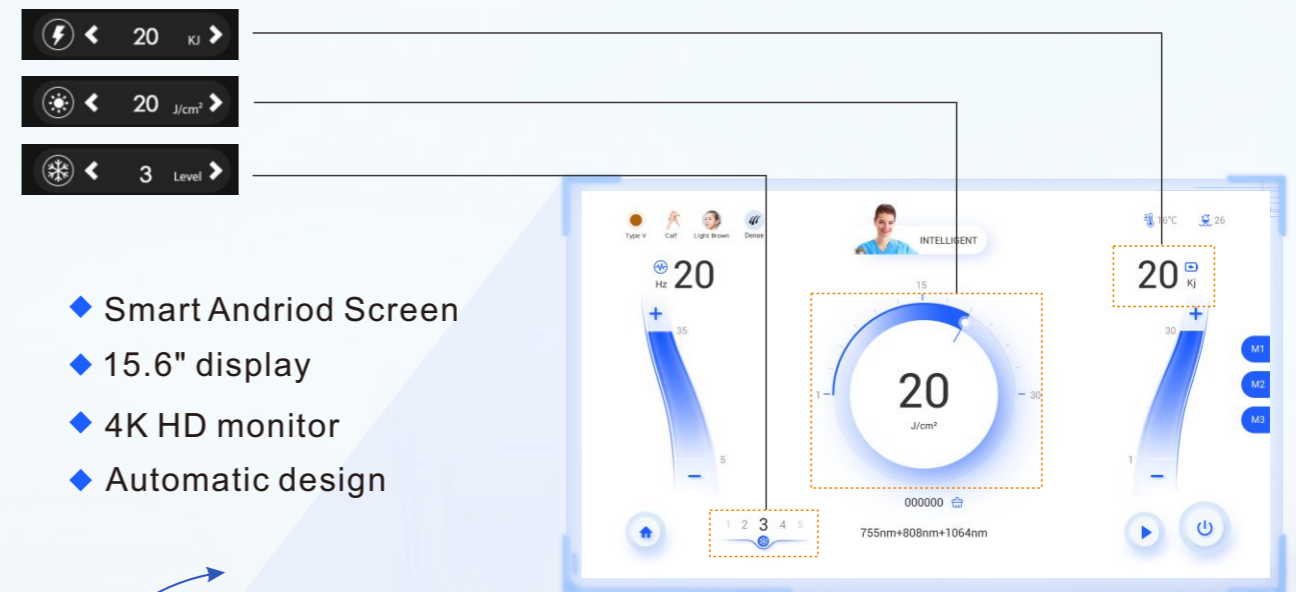
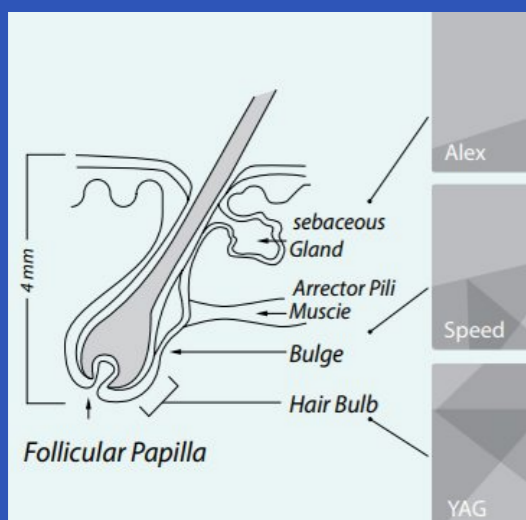
Decreased pain:

Unique mechanism reduces pain during treatment.



Treatment time:

Rapid coverage rate without gel or anesthesia. Quickly and comfortably.



- ◆ Smart Android Screen
- ◆ 15.6" display
- ◆ 4K HD monitor
- ◆ Automatic design



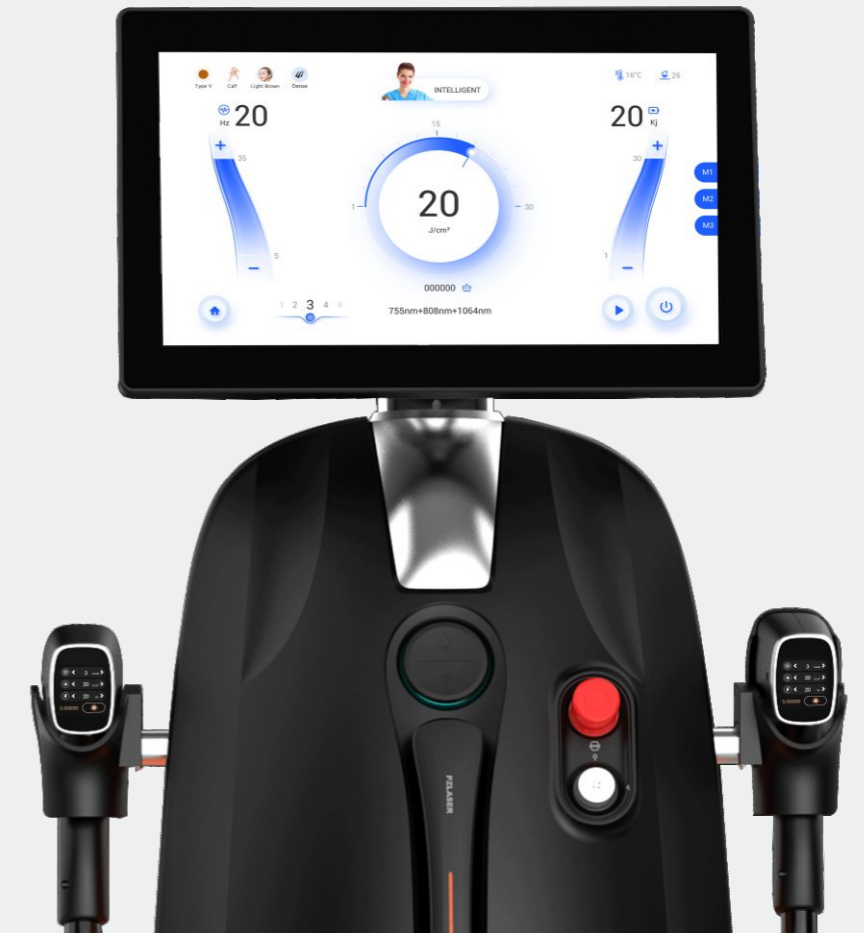
SCREEN LINKAGE

Handle screen intelligent linkage

Touch screen of handles, directly adjust parameters
Convenient and fast operation



EOSICE



HUMAN MACHINE INTERACTION

Latest Android smart screen

Direct interconnection with mobile phones for faster and more convenient operation



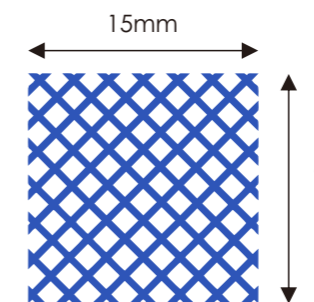
Support system update



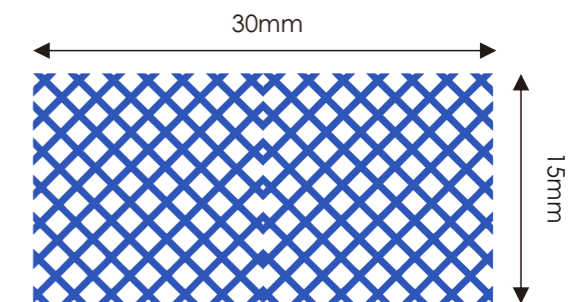
Support internet access



Customer information storage and processing



- For forehead, upper lips, cheeks, More accurate and effective.



- Fast treatment for large areas, Save treatment time and sessions.

HANDLE THREE WAVELENGTHS

Allowing you to customize laser hair removal treatments for all skin types



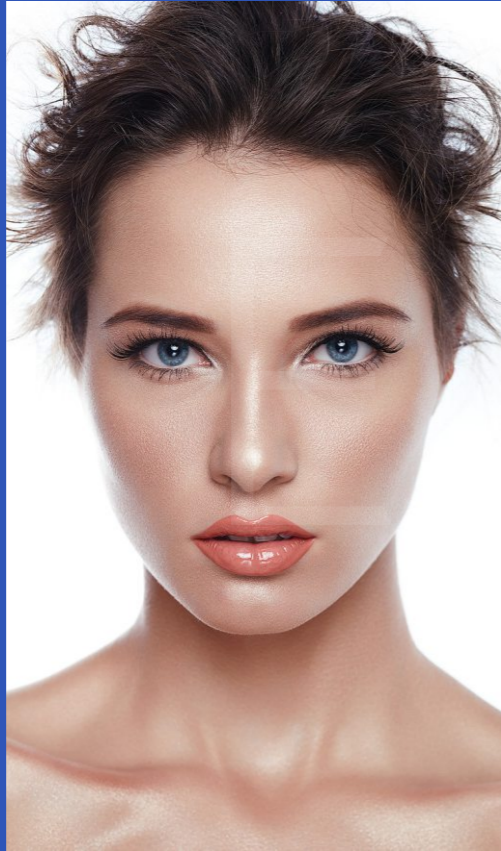
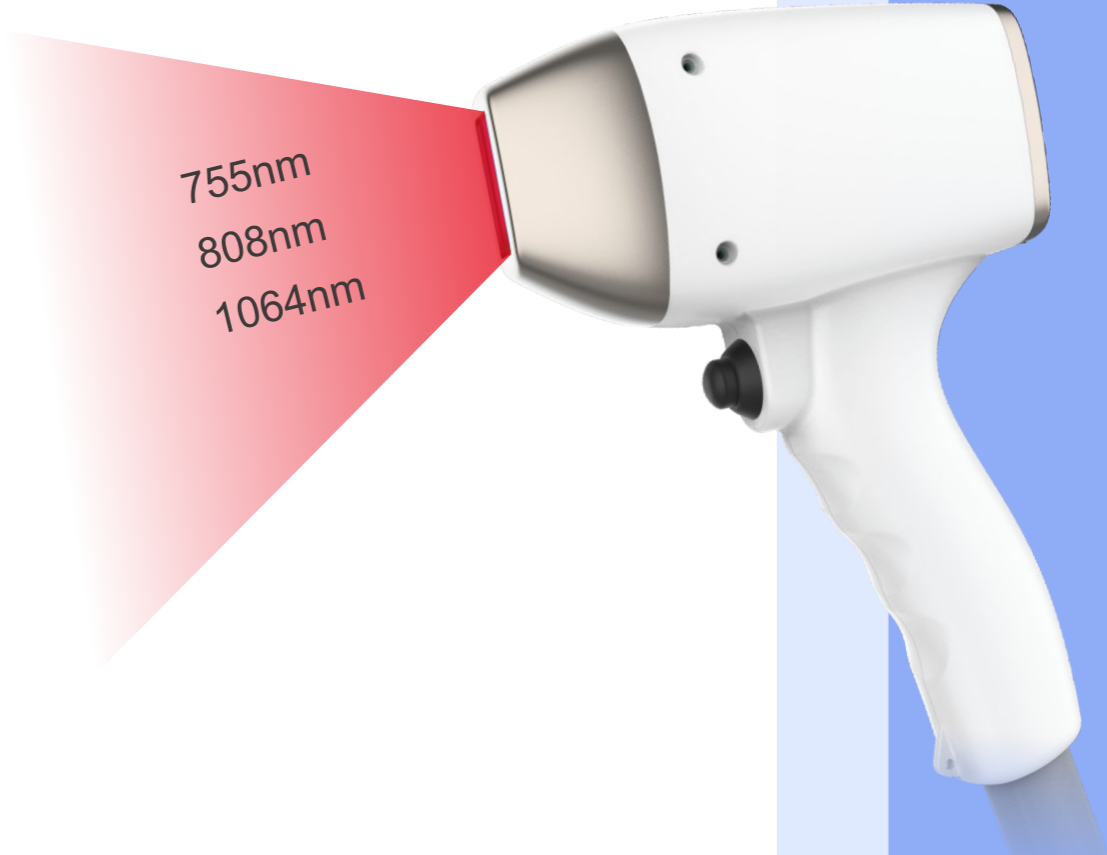
755nm recommended for treating pale skins (phototypes I-III) with fine hair. Indicated for removing the residual hair of the last sessions. With more superficial penetration, the 755nm wavelength targets the Bulge of the hair follicle and is especially effective for superficially embedded hair in areas such as the eyebrows and upper lip.



808nm recommended for treating all skin phototypes, particularly patients with a great density of hair and first sessions. Its deep penetration capabilities target the Bulge and Bulb of the hair follicle while moderate tissue depth penetration makes it ideal for treating the arms, legs, cheeks and beard.



1064nm indicated for treating dark phototypes (III-IV tanned, V and VI). The 1064nm offers the deepest penetration of the hair follicle, allowing it to target the Bulb and Papilla, as well as treat deeply embedded hair in areas such as the scalp, arm pits and pubic areas.



EosICE[®] MAX

DIODE LASER HAIR REMOVAL

Extra strong performance
"German  DILAS Laser Bars"



*Perfect painless hair removal,
more high-end!*

SMART COOLING SYSTEM

The latest research and development cooling system: The handle is upgraded from double-sided cooling to 360-degree circulating cooling, lowest temperature could down to -15C° within a few seconds. Perfect PAIN-FREE hair removal, more high-end.



1.5 times work efficiency: 72 hours of super long work to ensure stable function in busy clinic/salons.

SPOT SIZE (handle can be selected)



Diameter 8 mm
(Optional)

15*15 mm

15*30 mm

System customization •

Customizable screen logo •

Customizable language •

Touch screen of handles •

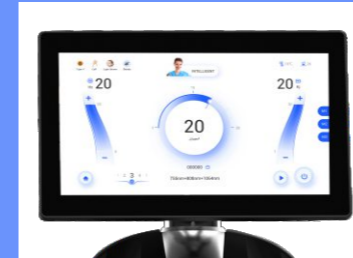
Customizable shell logo •

Customizable function •

Customizable machine colour •

Customizable lampshade •

Customizable casing •



User Interface



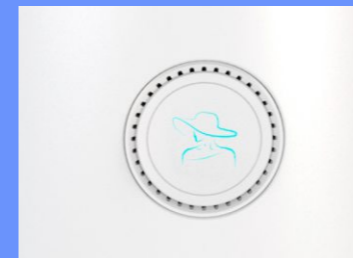
Adjustment button



Adjustable Angle



Ergonomic Armrest



Customized Logo



DLNA Handle



Socket



Handle Plug

In order to provide you with optimal treatment possibilities,
the vertical Eos Ice Max comes with.

TECHNICAL SPECIFICATIONS:

Laser type	755/808/1064nm 3 wavelengths
Display system	15.6 inch true color touch screen
Laser handle shots	80-100 millions shots
Cooling system	Air + Water + Double TEC Semi-Conductor + Annular cooling Chip
Spot size	15*15mm/ 15*30mm; Diameter 8 mm (Optional)
Power requirement	AC220/110V, 50/60HZ


Ice Cooling
Effect


All Skin
Color


Safe and
Painess


Multi-size
Spot


80-100
millions shots


3 Highly Effective
Wavelengths


Permanent
Hair Reduction


Mode Selectable
Men and Women

01

“ HOW ABOUT YOUR BUSINESS SENSE? ”



COOL GLAMOR[®]
Cryoelectronics, Shape & Shape



The Diversified Development of Global Body-Shaping Industry

The Multi-function combination has become a market drive.

「 BEFORE 」		「 NOW 」	
Muscle Building	EMSCULPT	EMSCULPTneo 「 2in1 Device 」	Muscle Building Cellulite Reduction
Cellulite Reduction	Coolsculpting	Cooltone Coolsculpting 「 2 Devices 」	Muscle Building Cellulite Reduction
Cellulite Reduction	Trusculpt ' 3D	Trusculpt ' flex Trusculpt ' 3D 「 2 Devices 」	Muscle Building Cellulite Reduction

「 Keep up with the trend to seize the opportunity.
COOL GLAMOR® makes another splendid achievement. 」

WHY CHOOSE US?

Global Partners



Deeper integration into the global industrial chain to enhance win-win cooperation.

Global Market Share



A GLOBAL BESTSELLER, A STAND-OUT BRAND

HISTORY
COOL GLAMOR®

2021

Self-developed 450ps Ultra Picolris® was launched globally and sold in more than 200 countries.

2020

ThermaLift RF® and EMS+RF obtained national utility model patent.

2015

- Our factory passed **ISO13485** (Quality Management Systems of Medical Devices)
- Diode **Eos ICE®** achieved EU **Medical CE** certification
- Cryolipolysis and Vacuum technology completed EU **Medical CE** registration

2011

Lipolaser achieved EU **CE** certification

2022

- **COOL GLAMOR®** launched globally with 8 innovative technologies.
- World premiere of **Private-Health Laser** with multi-segment vector wave.
- **Micro-Focused Ultrasound** patent plays the main melody of industrial innovation.

2018

- **Eos ICE®** achieved **FDA** certification, and obtained other medical certifications such as Brazil **ANVISA**, Australia **TGA**, Israel, Canada **CMDR**, etc.
- **SonicSculp®** successfully produced and obtained EU **CE** certification
- Self-developed **HIFU** obtained Italian **CE** certification

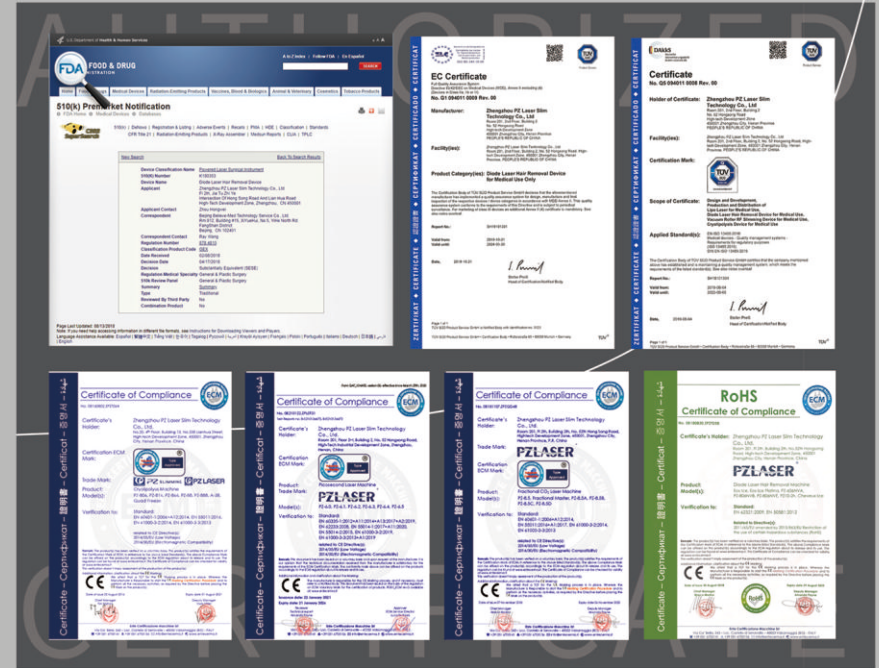
2014

Established **PZLASER®** R&D Center in Israel

2006

Established R&D Department in Beijing

BE OBVIOUS TO ALL



AUTHORITATIVE CERTIFICATION
TO BE TOP INTERNATIONAL BRANDS

Superior products are inseparable from the escort of strict quality control. COOLGLAMOR® has more than 200 domestic and foreign patents and intellectual property rights, and has international certifications such as the EU CE certificate, which is second to none in the industry.



S H A P E

01

The world's first patent
Freezing+ Electromagnetic

02

Thermostatic Massage
Lose weight safely by just lying down

03

150Hz+3Tesla
≈3000 muscle workouts

04

Non Invasive
No Downtime

05

Multi-Functional
Personalized Customization

「The miracle of body shaping」



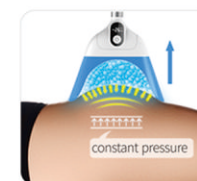
1st Step: Heating

01
Promote blood
circulation and
improve comfort.



2nd Step: 360° Cooling

02
All-round freezing,
real-time temperature
detection.

3rd Step: Vacuum+
Massage Mode

03
One suck one release,
the process is more
comfortable. Also,
accelerate fat cell
apoptosis.

4th Step: Heating After
Treatment

04
Rewarm adipose tissue
again to speed up blood
circulation.



Focused Electromagnetic

Two Treatment One Week.

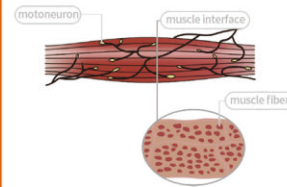
BEAUTIFUL

HEALTH



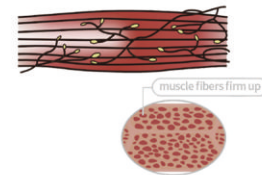
One course of treatment, reduction of fat is **19%**.
 Waist circumference loss **4cm**.
 Promoting the rapid breakdown of a large number of fat cells, converted into beautiful ATP energy.
 Fat metabolism increased to **5** times

The miracle of muscle building



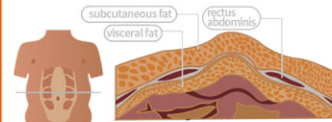
BEFORE TREATMENT

Muscle is thin and the circumference of muscle is short. Myofibrillar is loose with small density.



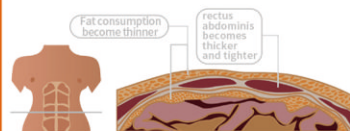
AFTER TREATMENT

Muscle is strong and the circumference of muscle is long. Myofibrillar is strengthened and increased with large density.



BEFORE TREATMENT

Subcutaneous fat and visceral fat are thick. Muscle is thin with fatty and loose body.

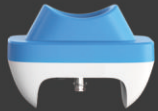


AFTER TREATMENT

Subcutaneous fat and visceral fat are reduced. Muscle is strengthened and increased with firm and strong body.

APPLICATOR INTRODUCE

The fourth-generation applicators are upgraded with exclusive patent, creating a core competitive advantage that is unique to COOL GLAMOR®.



Wing Mini
Double Chin



Flat Mini
Axilla, Knees



Flat
Abdomen, Arms,
Inner Thighs



Arc-T
Outer Thighs,
Inner Thighs



Wing
Abdomen, Flanks,
Love Handles



Wing Plus
Abdomen, Bra Line,
Flanks, Love Handles,
Below Buttocks



Wing Max
Abdomen, Flanks,
Love Handles



Flat applicator



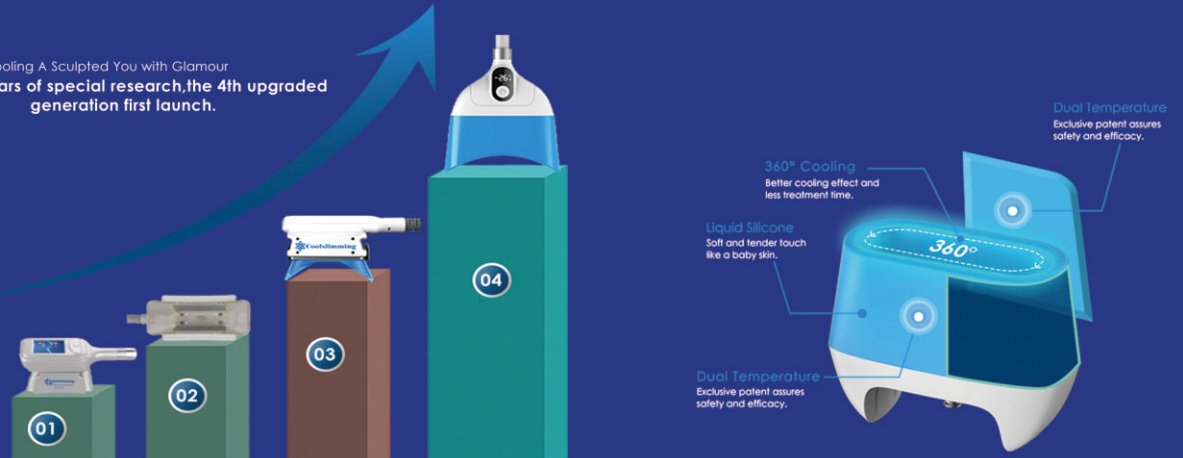
Curve applicator

The exclusive curved handle is more ergonomic and perfectly fits the lines of the limbs, waist and buttocks, and the effect is intuitive and visible.

4.0 Version Applicators

Patented dual temperature monitor, guaranteeing safety and effectiveness.

Cooling A Sculpted You with Glamour
With 12 years of special research, the 4th upgraded generation first launch.

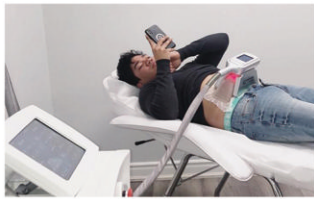




ESTHETICS



INTERNATIONAL



POWER



VANGUARD



EXPLORE



SOCIAL BUZZ

A new gathering place for social media traffic to seize the future blue ocean.



"Maybe you have succeeded, but will not refuse more self-transcendence and self-identification"

"Maybe you haven't predicted the next cusp, so you need to approach new opportunities."

"Instead of waiting, it is better to take the initiative to discover."

" COOL GLAMOR® awakens women's new energy and meets a better self."



Expert Testimony

Dr. Juliana Santos

Board Certified
Dermatologist

“ CoolGlamor is a new generation of fat-loss and muscle-building equipment. It's to selectively and safely cool the subcutaneous tissue, eliminate fat cells, and achieve the purpose of weight loss; at the same time, the high-energy electromagnetic energy acts on the core muscle group to achieve sustainable muscle line shaping. ”

Dr. Yadira Lashley

Laser and Cosmetic
Dermatology Dermatologist

“ I am delighted to choose CoolGlamor and be the first to offer this novel treatment in my practice. I believe it will be a pioneer in the field of body sculpting, offering new opportunities for patients who are looking for a comfortable solution to remove cellulite and build muscle. ”

Dr. Jennifer Moreno

Renowned
Cosmetic Dermatologist

“ CoolGlamor is patent-based technology to eliminate cellulite and strengthen muscle. What surprises me is that it can be used for an entirely non-invasive treatment. ”

Karen Lane

Cosmetic
Nurse Specialists

“ Recently a new procedure was introduced in our clinic. That's CoolGlamor. It achieves the effects of freezing and electromagnetics with a luxurious body experience. It's an innovative combination, which I think is best for body contouring and muscle toning. ”

Aleksandra Mitchell

Director of
Aesthetic & Medical Clinic

“ Cryolipolysis is an ideal complement to electromagnetic technology. Both are very strong, with visible results and high satisfaction rates. Science proves they work. ”

TECHNOLOGICAL SHAPING

FROM ISRAEL

Best-selling in more than 200 countries



Brief Introduction

- The Eos ICE® PLATINA is a medical diode laser with a wavelength of 808 nm/808&755&1064nm. The device is equipped with a powerful cooling system , cooling the head up to -10 °C. The head allows you to perform quick and comfortable treatments, and the 600W laser makes epilation more effective. The sapphire tip minimizes the risk of burns on the surface of the skin while keeping the hair follicles warm.





DESCRIPTION

- Eos ICE® PLATINA is a diode laser with a wavelength of 808 nm designed for hair removal. The effects of using the device are visible after the first treatment. Treatments with the use of the Eos ICE® PLATINA laser are painless, as well as quick and comfortable. The Eos ICE® PLATINA device allows you to get smooth skin quickly and safely. Epilation is extremely effective and provides long-lasting results.





Advanced cooling technology

- The head of the Eos ICE® PLATINA device is equipped with advanced cooling technology that effectively cools the skin during the treatment. The sapphire tip minimizes the risk of burns on the surface of the skin while keeping the hair follicles warm. Contact cooling increases patient comfort, making treatments more enjoyable than ever before.





Why does Eos ICE® PLATINA remove body hair?

- The light emitted by the Eos ICE® PLATINA laser is absorbed by the hair dye, which causes damage and then gradual disappearance of the hair bulb. The beam of rays damages the hair follicle by absorbing energy. The melanin contained in the bristles absorbs the bundle and as a result the hair is significantly damaged. Cell division is stopped, the hair stops growing and falls out. Eos ICE® PLATINA laser epilation enables permanent hair removal from all areas of the body.



Unprecedented enjoyment of hair removal

- Smart touch screen: sensitive touch, efficient parameter setting scheme
- 2000w high power: the energy is 3-4 times higher than the traditional, the output is more stable 20 million times the heart of energy: high-quality escort of American coherent laser
- Fast sliding mode: It only takes 1 minute to remove hair on one side of the forearm, time saving
- 1.5 times work efficiency: 72 hours of super long work to achieve sufficient working time



Advantages

- PORTABLE DESIGN
- Desktop design, small size, space saving, and more advantages.
- APPLICATOR FEATURES
- High-power applicator with innovative ultra-light material ONLY 365g !
- The applicator is small and light, which greatly improves the comfort of the operator and the efficiency of hair removal.
- TOUCH COOLING SYSTEM
- The sapphire touch cools the skin to -5°C , and the reliable and constant cooling system ensures the comfort and safety of the skin.
- INTELLIGENT CONFIGURATION,
- Built-in data of diversified clinical research for many years, and index can be set freely.



TECHNICAL DATA :

- Energy: 1-100J / cm²
- Laser power: 600W
- Device power: 2000W
- Wavelength: 808 nm, 808&755&1064nm optional
- Pulse width: 10-400 ms
- Maximum head cooling temperature: -10 °C
- Dimensions: 75*60*58 cm
- Gross weight: 49 kg





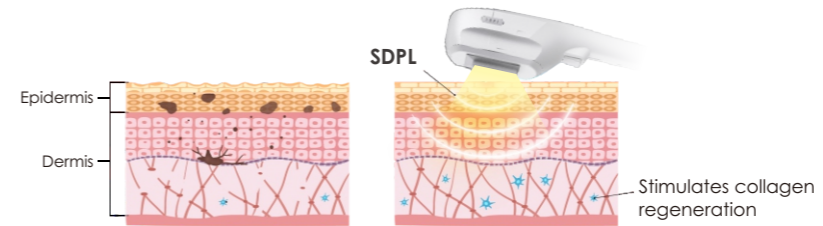
We guarantee



- 12-month warranty
- Authorized, quick warranty and post-warranty service
- After-sales support



ADDITIONAL TECHNOLOGIES FOR COMPLEMENTARY TREATMENTS

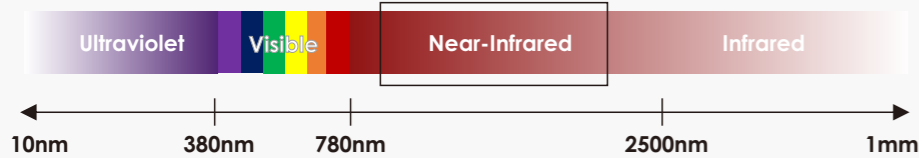


SDPL for Skin
Wavelength 530-850nm

Targets all layers of hyperpigmentation, including dark skin, and all types of pigmented and vascular lesions.

NIR POWER HIGH TECHNOLOGY

Contouring and Tightening Face and Body Solution



Milk light NIR adopts 900nm-1800nm band spectrum.

1. High end professional-grade skin rejuvenation technology.

Most efficient to achieve uniform skin tone and texture.

2. German Heraeus special infrared light source.

Combined special band, Energy most uniform and safest.

3. The ergonomic applicators, very lightweight, making practitioner earlier to perform.



• NIR-Body

Max spot size 14 cm²
(23mm * 62mm)



• NIR-Face

Optional with spot size 3.2 cm²
(8*40mm)

Specifications

HDPL: Wavelength 640nm-850nm
SDPL 530-850nm (Optional)

HDPL Spot size: 5 cm² (10*50mm)
or 3.2 cm² (8*40mm)

HDPL Shot: 1000 Thousand shots

NIR: 900nm-1800nm band spectrum

NIR Spot Size: 14 cm² (23mm * 62mm)
or 3.2 cm² (8*40mm)

NIR Shots: no pulse limits

Dimensions: 73*56*55cm, 40kg

Power Supply: AC230V,50Hz / AC110V, 60Hz





HydraStar™
Make You a Star!

Meet all skin care needs!

- Fine lines and wrinkles
- Elasticity and firmness
- Even tone and vibrancy
- Skin texture
- Brown spots
- Oily and congested skin
- Enlarged pores

3 STEPS. 30 MINUTES.

Get the Best Skin
of Your Life

It delivers instant and long-lasting results that you can see and feel.

STEP1 CLEANSE+PEEL

Uncover a new layer of skin with gentle exfoliation and relaxing resurfacing.

STEP2 EXTRACT+HYDRATE

Remove debris from pores with painless suction. Nourish with intense moisturizers that quench skin.

STEP3 FUSE+PROTECT

Saturate the skin's surface with antioxidants and peptides to maximize your glow.

DEEP CLEANSING SKIN SYSTEM

Cleaning blackheads, acne, and mites while moisturizing nutrients supplying; fining pores, increasing the skin transparency, and improving skin texture.

What is special about it?

Three times the power of the operating head.



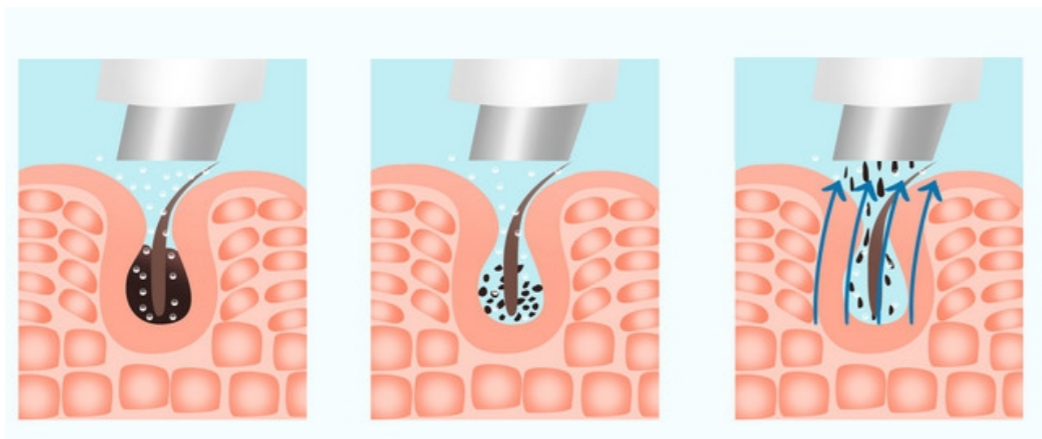
The three major areas with clear division of work can achieve three times the effect at one time.

ANTI-ALLERGY

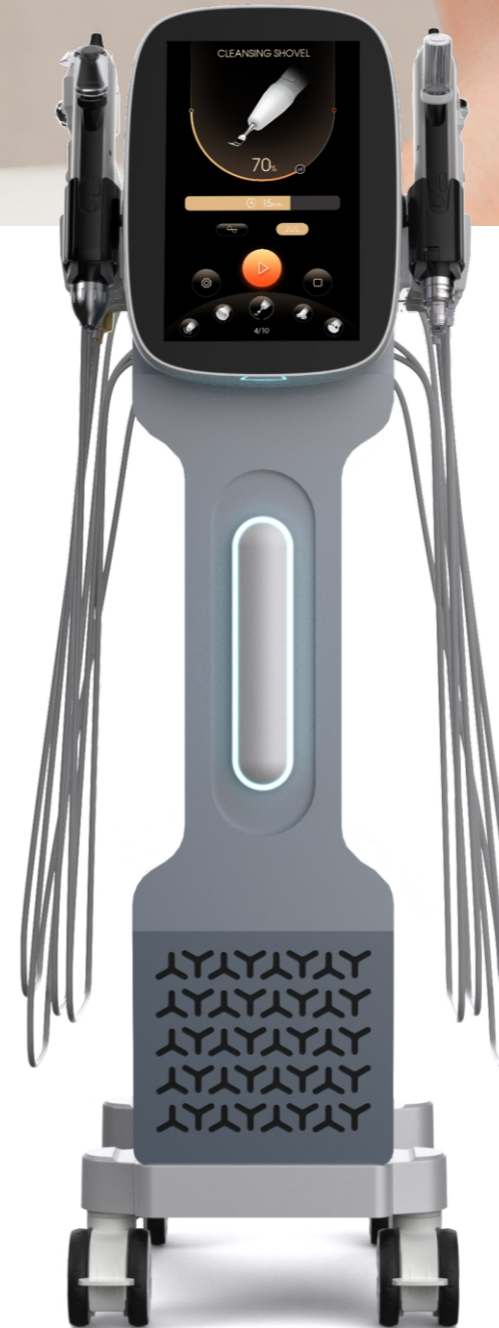
SOOTHING

REPAIR

SKIN TIGHTENING



HydraStar™
Make You a Star!



INTELLIGENT OPERATING SYSTEM

- Versatile Functions
- Versatile Languages
- User - Friendly UI
- 10.4" display
- 10 in 1 Platform

VERSATILE APPICATORS - 10 IN 1 PLATFORM

1.AQUA PEEL



Use vacuum to open pores for a deep cleanse and easy extraction of impurities and dead skin cells. It also allows the active ingredients in our boosters to penetrate deeper, for the most effective treatment possible.

2.OXYGEN JET



High-pressure oxygen injection, small particles and strong penetration Penetrates deep into the basal layer, enhances water retention, and absorbs more easily by narrowing pores

3.EMS FACE



Nanocrystals promote the absorption of skin care products by opening channels for skin absorption Therefore, when nanocrystals are used, skin care products can be more absorbed by the skin

4.COLD-HEAT



Quickly lower the temperature below 0 degrees for skin quality, and achieve the effect of removing redness, anti-sensitivity, firming and shaping

5.MICRO LIFT



Anion and cation EMS microcurrent alternates between positive and negative, so that cations are imported and anions are exported improve facial contours

6.OXYGEN



Create an oxygen supply environment, activate cells, and enhance absorption Inject the product into the deep layer of the skin and cooperate with fruit acid skin peeling products

7.ULTRASOUND



Ultrasound—1 to 3 million vibrations per minute, opens the pores, allowing the essence to quickly penetrate into the base layer of the skin, allowing the absorption rate to reach more than 90%

8.RF



The probe can emit radio waves that vibrate 6 million times per second. The high-frequency vibrations are the molecules in the skin that generate heat due to friction, so as to achieve the effect of firming the skin and improving wrinkles

9.CLEANSING SHOVEL



Use high-frequency vibration waves to soften the stratum corneum and deeply clean the skin dirt

10.ANALYZER



Skin Analyzer:
The best tool to make skin analysis and offer best solutions !

A Type

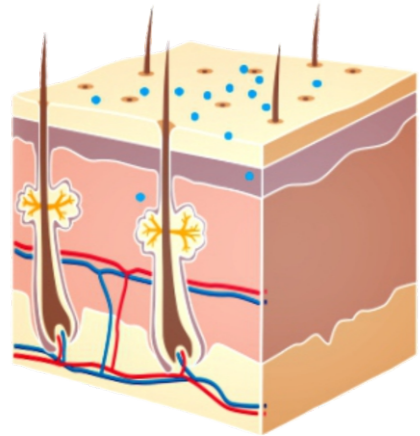
- 1.Aqua Peel
- 2.A Type(OXYGEN JET)
- 3.EMS FACE
- 4.COLD-HEAT
- 5.MICRO LIFT
- 6.OXYGEN
- 7.ULTRASOUND
- 8.RF
- 9.CLEANSING SHOVEL
- 10.ANALYZER

B Type

- 1.Aqua Peel
- 2.B Type(OXYGEN JET)
- 4.COLD-HEAT
- 5.MICRO LIFT
- 6.OXYGEN
- 7.ULTRASOUND
- 8.RF
- 9.CLEANSING SHOVEL

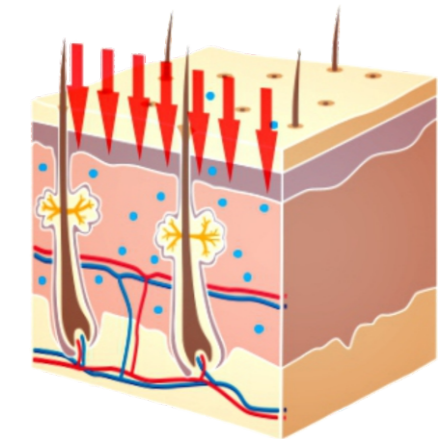
HOW EMS FACE WORKS ?

Nanocrystals use nano-scale contacts, which are as thin as more than 250 nanometers and as short as 0.1 mm, which can just open the stratum corneum of the skin without touching the dermis. It not only solves the problem of skin absorption, but also achieves painless and non-invasive treatment!



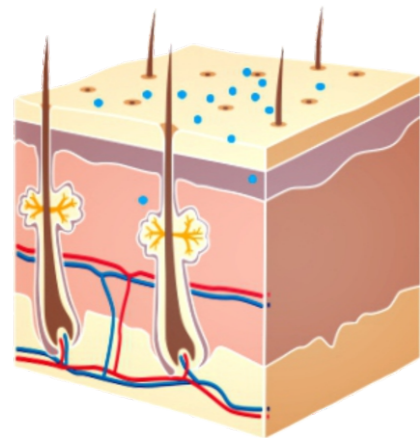
Natural application and absorption

In the case of natural application and absorption of skin care products, the molecules of skin care products only penetrate into the epidermis. It is difficult to penetrate into the deeper skin layer, and the absorption rate is very low.



Nanocrystalline nanochip (The product can penetrate evenly into the dermis.)

Nanochips only penetrates the barrier layer of the epidermis without touching blood vessels and nerves. It is painless and non-invasive, and the absorption capacity is greatly improved.



EMS function

The microelectronic heat conduction technology opens the pores, which can increase the product absorption rate by more than 40%.

Principle of nanochip introduction

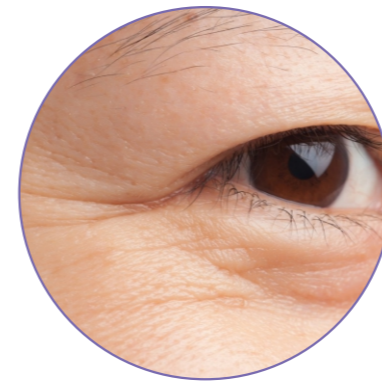
- ① Nanocrystals are made of monocrystalline silicon. In addition to being tough, monocrystalline silicon can also be thin enough and short enough to only break through the barrier layer of epidermal absorption, and it's far from touching blood vessels and nerves, so you can't feel pain, nor will it bleed.
- ② Nanocrystals promote the absorption of skin care products by opening the skin absorption channel, so skin care products can be more absorbed by the skin when nano crystals are introduced.



Sagging skin



Dry and water shortage



Fine water wrinkles



Gloomy





LIFE-CHANGING RESULTS

The amazing results are both instant and long-lasting.

FINE LINES



before

after

NASOLABIAL FOLDS



before

after

BROWN SPOTS



before

after

OILY & CONGESTED SKIN



before

after

ENLARGED PORES



before

after

EVEN TONE



before

after

SAGGING SKIN



before

after

DRY SKIN



before

after

CUSTOMER FEEDBACK



NAME: Jane Kirby
FROM: USA

“ I am amazed by the visible reduction in fine lines and wrinkles after using the Hydra Star beauty device. My skin looks smoother and more youthful! ”



NAME: Lisa Kelly
FROM: England

“ The Hydra Star beauty device has transformed my skincare routine. It effectively clears out impurities, leaving my pores visibly smaller and my complexion brighter. ”



NAME: David Bowie
FROM: Germany

“ I struggled with acne for years, but the Hydra Star beauty device has been a game-changer. It helps control breakouts and leaves my skin feeling clean, refreshed, and bish-free. ”

MRF-X is an advanced workstation



MRF-X®

1. High Tech Full Screen : it adopts newest generation Iphone screen, very Eye-catching
2. Advanced Real-time Temperature Sensing : with different color to show temp, from blue to red , very easy for operator
- 3, Super Strongest RF until 250W, available for full body treatment , such as face ,abdomen, upper Arm ,buttocks, thigh, calf





Wrinkles Removal



Skin Tightening



Visceral Fat Removing



Beautify the Skin



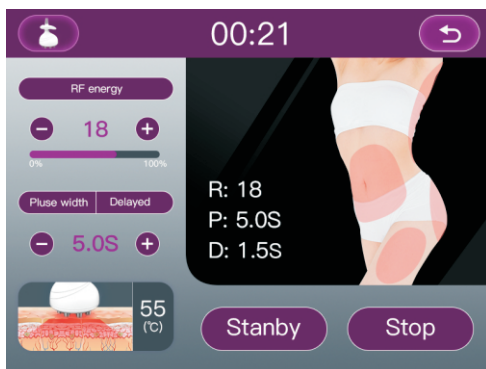
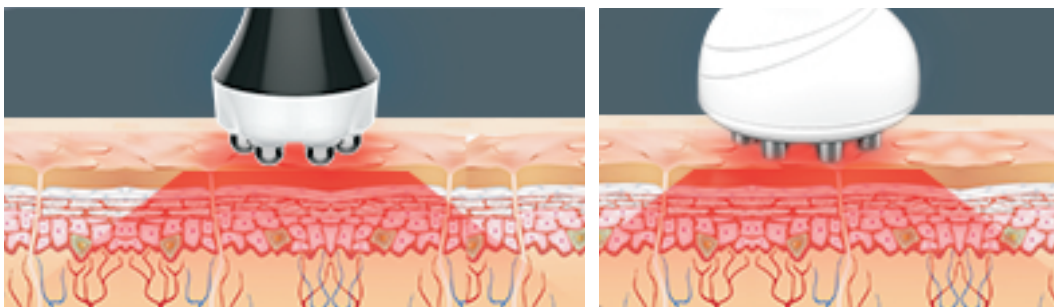
Body Shaping

MRF-X[®]

Application



MRF-X adopting the newest generation of RF firming technology, and the accurate action on superficial layer, middle layer and deep layer to achieve the purpose of wrinkles removal, skin tightening, visceral fat removing, skin beautifying and body shaping.



Advanced intuitive software Rate

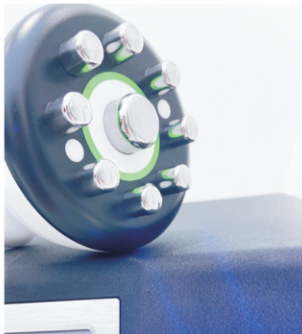




MRF-X[®]

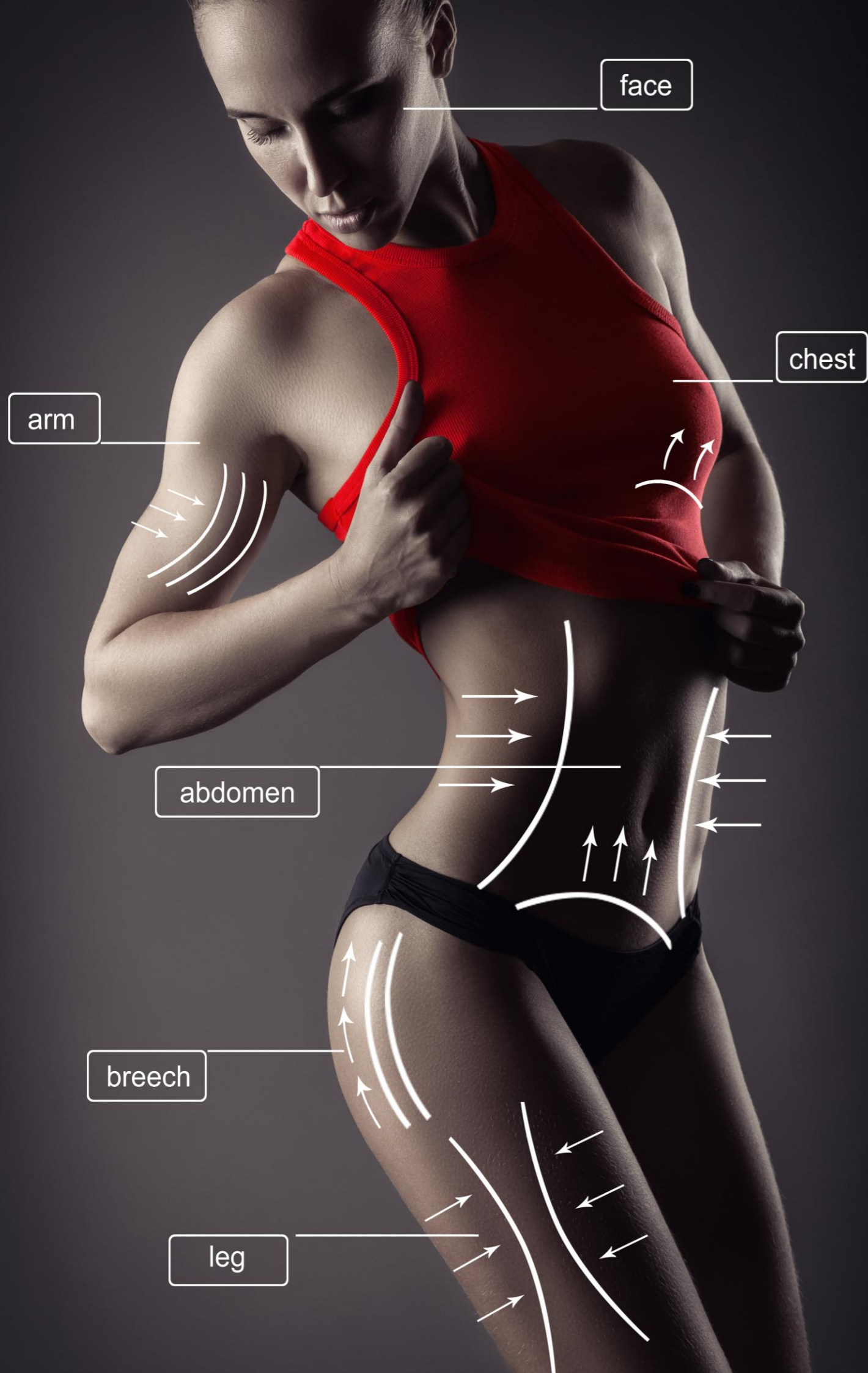


MRF-X[®]





MRF-X[®]



Principle

It is a super device for shaping and removing wrinkles that integrates 5 technologies such as RF (radio frequency), VAC (negative pressure), infrared light energy, mechanical rollers, and skin folding. Through aerobic exercises such as suction, pinching and massage of connective and fat tissue, which cause deep heating of the fat cells, their surrounding connective tissue and the underlying dermal collagen fibers. Combined with 650nm near infrared and radio frequency thermal energy physical therapy, this type of efficient heating and vacuum stimulates the growth of new and better collagen and elastin which results in localized reduction in skin laxity, body volume, and an overall improvement in skin structure and texture.

8 APPLICATIONS

Results-oriented Active Body Contouring

Reduce your cellulite 1

Tighten your skin 2

Tone your body 3

Enhance your musculature definition 4

Improve your skin tone and texture 5

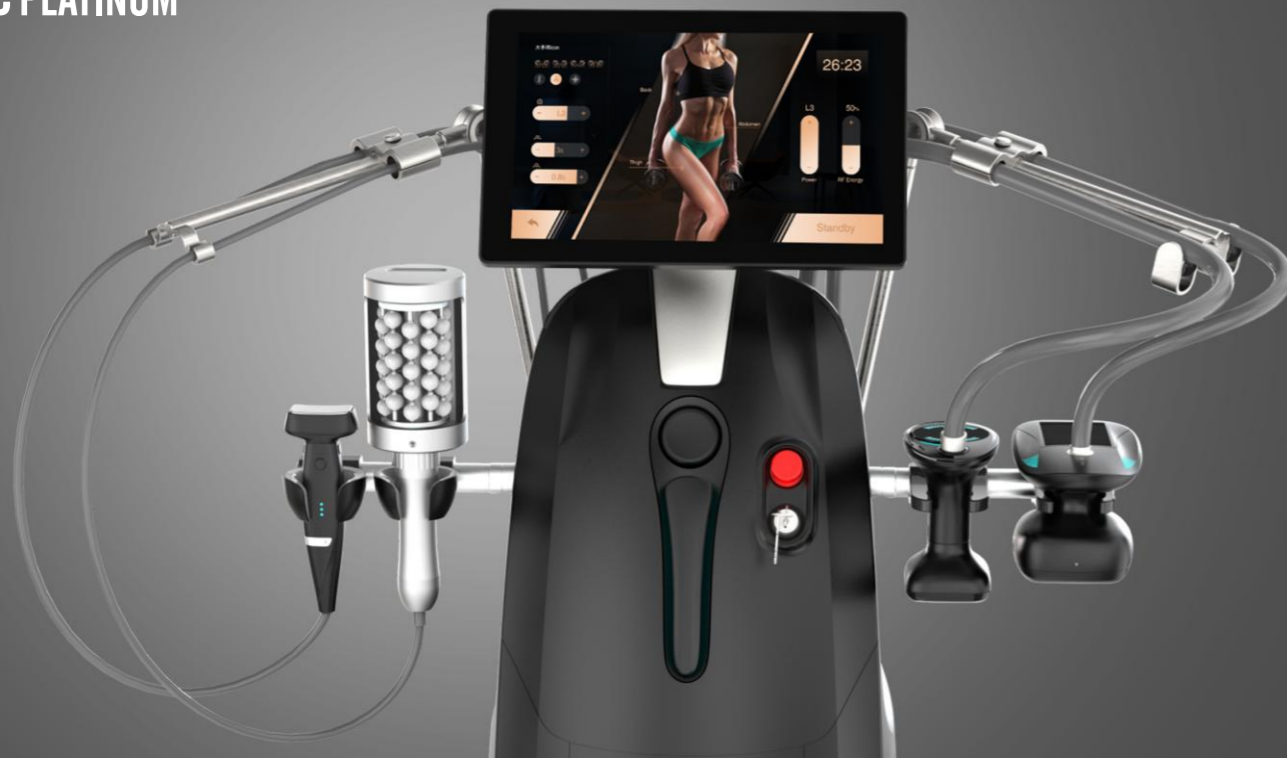
Reduce pain + promote healing 6

Increase lymphatic circulation 7

Completely noninvasive + pain-free 8



V-shape PLATINUM



Unique 6 luxurious applicators

- According to the treatment site, items, demands, matching applicators. Easily achieve the purpose of perfect body figure, weight loss, skin tightening and skin texture improvement.
- Reduction of the treatment time and course of treatment to achieve the desired effect.



Magic Ball Handle



Large Body Handle



Medium Limb Handle



Small Facial Handle

Magic Ball Handle [with Compressive Microvibration technology]

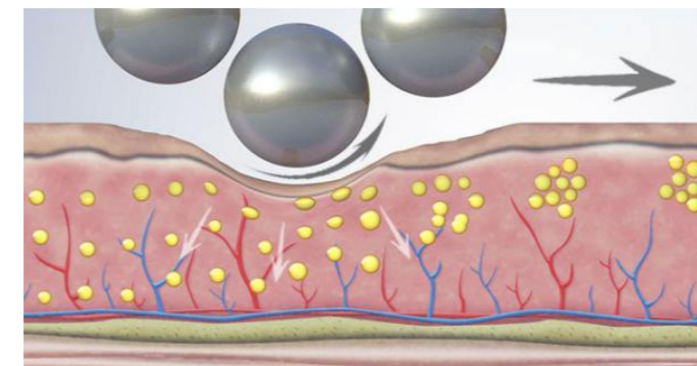
Magic Ball handle uses an innovative Compressive Microvibration technology. Through a roller device composed of 50 silicon spheres, generates low-frequency mechanical vibrations.

It is shown to tighten and tone muscles and tissues, smooth the skin, improve the structure and sculpt the face and body.

After treatment, there's a reduction in cellulite, elimination of wrinkles, and inches lost from the waist and thigh circumferences.

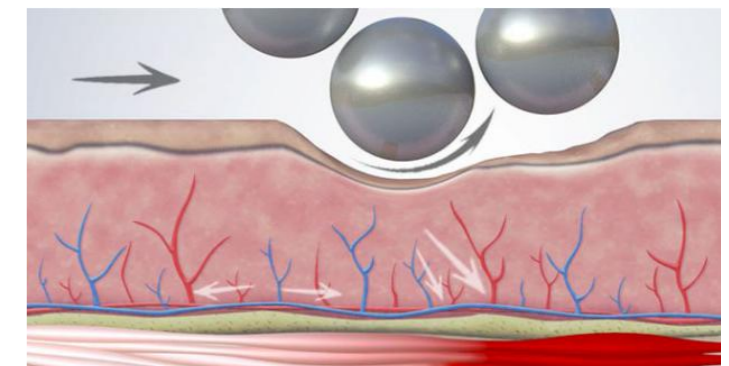


5 ACTIONS IN ONLY ONE TREATMENT



Remodeling action

Reshapes the silhouette and smooths out wrinkles.



Muscle action

Tones muscles and firms' tissues.

Large body handle

[with Vacuum Roller+Bipolar RF+Infrared Light+Negative Pressure technology]



Vacuum Roller

Roller mechanical massage is a fundamental gymnastics for the skin and adipose tissues. Furthermore, it weakens cellulite accumulations and immediately activates blood and lymphatic circulation.



Bipolar RF

The deep heating is generated by Bipolar RF in the subcutaneous tissue; it favors the production of new collagen and elastin fibers through the stimulation of fibroblasts.



Infrared Light

Infrared Light is a careful, targeted approach to fat cells, physiologically triggering lipolysis with the achievement of a consequent volumetric decrease of adipose tissue without side effects.



Medium limbs handle

[with a square tip and a circle tip for option]

The medium handle have two different heads , combine with RF , Negative pressure, infrared light , rollers technology together.

Through aerobic exercises, such as suction, pinching and massage of connective and fat tissue, which cause deep heating of the fat cells, their surrounding connective tissue and the underlying dermal collagen fibers.

Combined with near infrared and RF thermal energy physical therapy, stimulates the growth of new and better collagen and elastin which results in localized reduction in skin laxity, body volume, and an overall improvement in skin structure and texture.



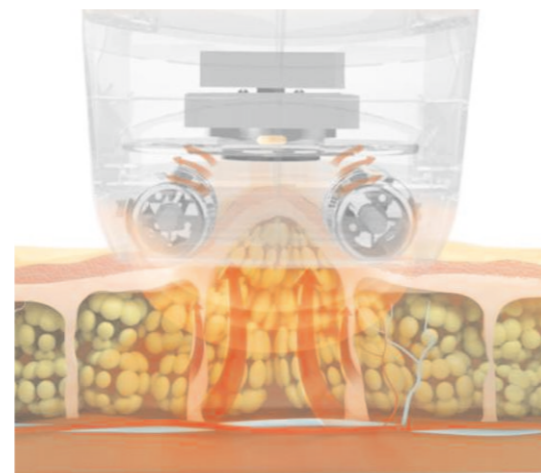
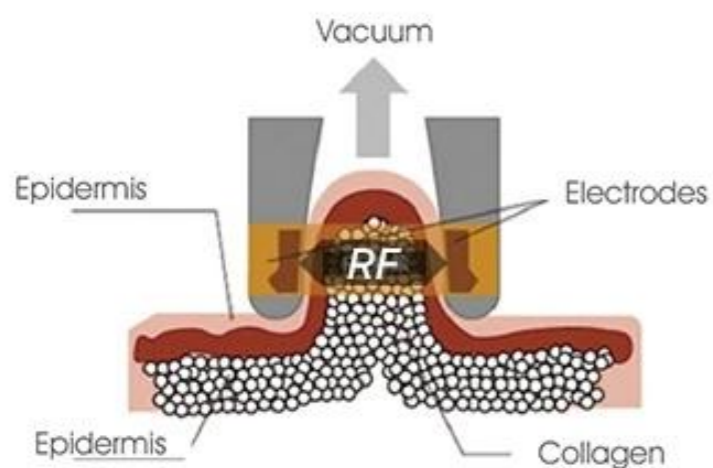
Small Chin and facial handle

[with three tips for chin, eyes and face]

RF technology stimulates the growth of new and better collagen and elastin which results in localized reduction in skin laxity, collagen volume, and an overall improvement in skin structure and texture.

Benefits of 3 facial Tips

- ✓ Reduce fine lines and wrinkles
- ✓ Tighten and tone facial skin
- ✓ Smooth out crow's feet, brow lines, and forehead wrinkles
- ✓ Brighten your complexion
- ✓ Smooth out skin tone
- ✓ Improve dark circles under the eyes
- ✓ Reduce puffiness under the eyes





15.6 inch intelligent
Android UI



Proven Results

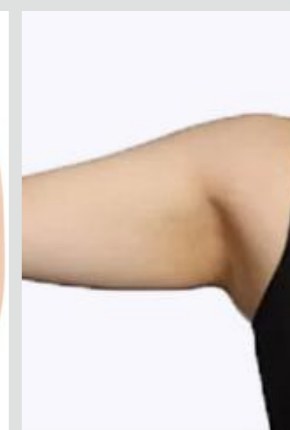
Before



After



Before



After



Before



After



Before



After



Before



After



Before



After



Before



After

